



10 Tomarah Crescent DEVONPORT TAS

3 2 3

This is a beautiful family home positioned on an elevated 846sqm approx. block of land only a few minutes drive from Devonport's CBD.

Just on 7 years old the home is fully insulated with the benefit of mains gas hot water, heating and cooking.

There is a reverse cycle heat-pump in the main living space for keeping cool in summer and toasty in winter.

The views from here are expansive and stunning, giving the new owners a sense of tranquility, whilst being close to everything this location has to offer.

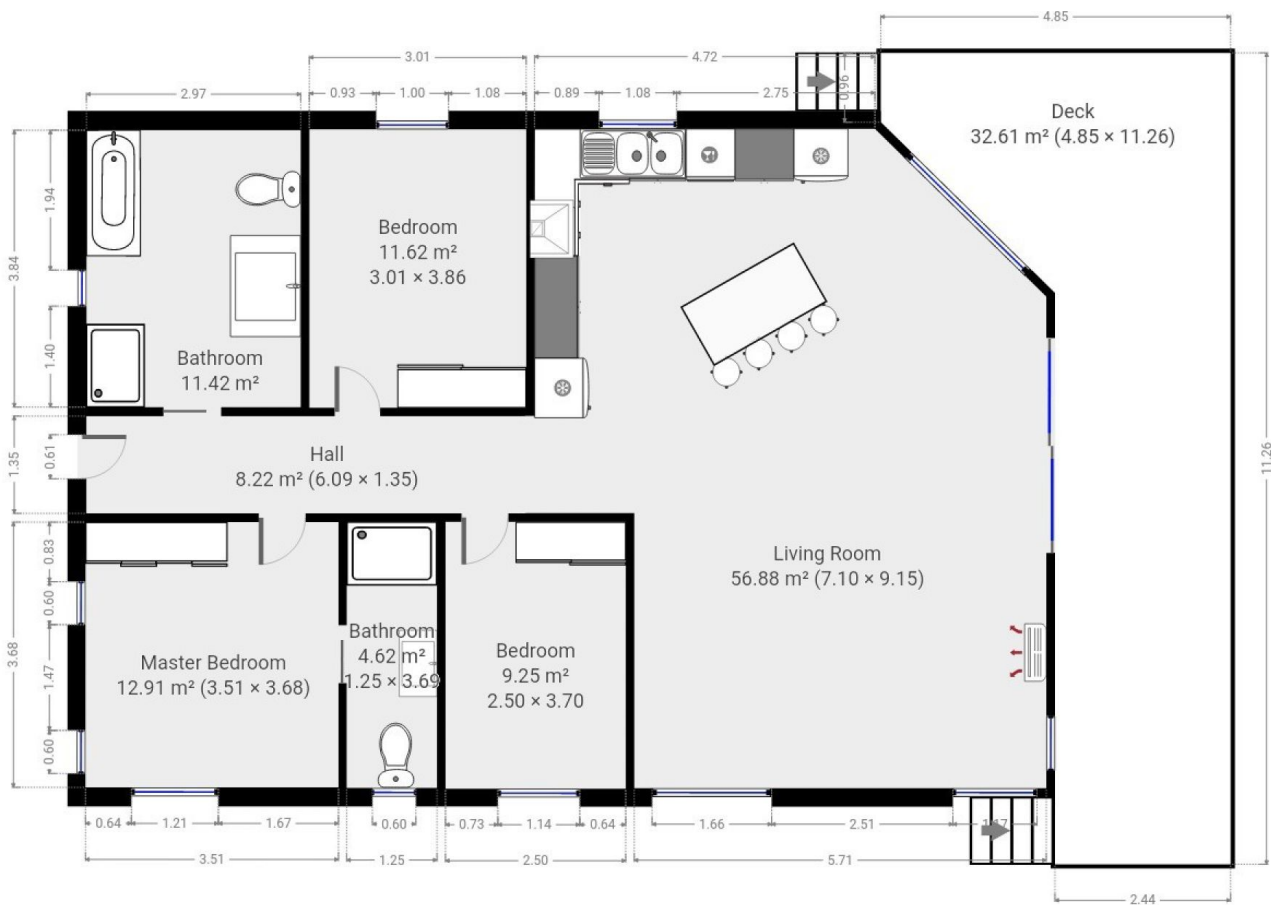
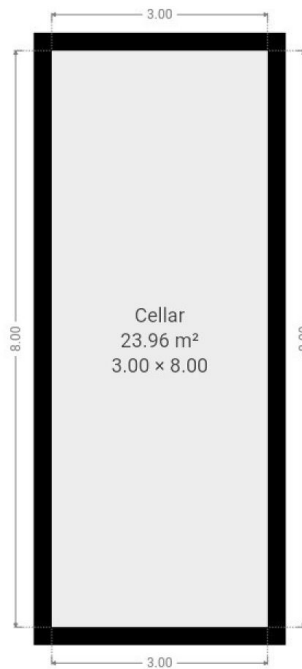
The local Don river walking tracks, Devonport's Aquatic Centre, dog parks and beaches are all within short walking distances.

Inside the home there are three bedrooms all with large built in's and the master affords an ensuite.

Type : House
Building Size : 15 sqm
Land Size : 846 sqm
View : <https://www.mbre.com.au/sale/tas/burnie-devonport-nw-tas/devonport/residential/house/7328361>

[For full version visit the website](https://www.mbre.com.au)

<https://www.mbre.com.au>



THIS FLOORPLAN IS PROVIDED WITHOUT WARRANTY OF ANY KIND. SENSOPIA DISCLAIMS ANY WARRANTY INCLUDING, WITHOUT LIMITATION, SATISFACTORY QUALITY OR ACCURACY OF DIMENSIONS.

