



## 95 High Street SHEFFIELD TAS

4 1 2

The beautiful township of Sheffield is bursting with appeal and charm and this superb family home has an abundance of both. Situated on approximately half an acre of lush lawns and garden, this home is something to behold. The main living space has a northerly aspect and is both warm and spacious, easily accommodating large furniture. The bedrooms are huge and could be configured as 4 bedrooms, one is currently utilised as a formal dining area. The kitchen has a farm house feel and perfectly compliments the style of the home and surrounds. The main bathroom has been fully updated and with two toilets queues are kept to a minimum.

With a bar area adjacent to the alfresco space and radiant, furnace ducted heating, the picture is complete. Words can't fully describe the warmth and feel of this home, it truly

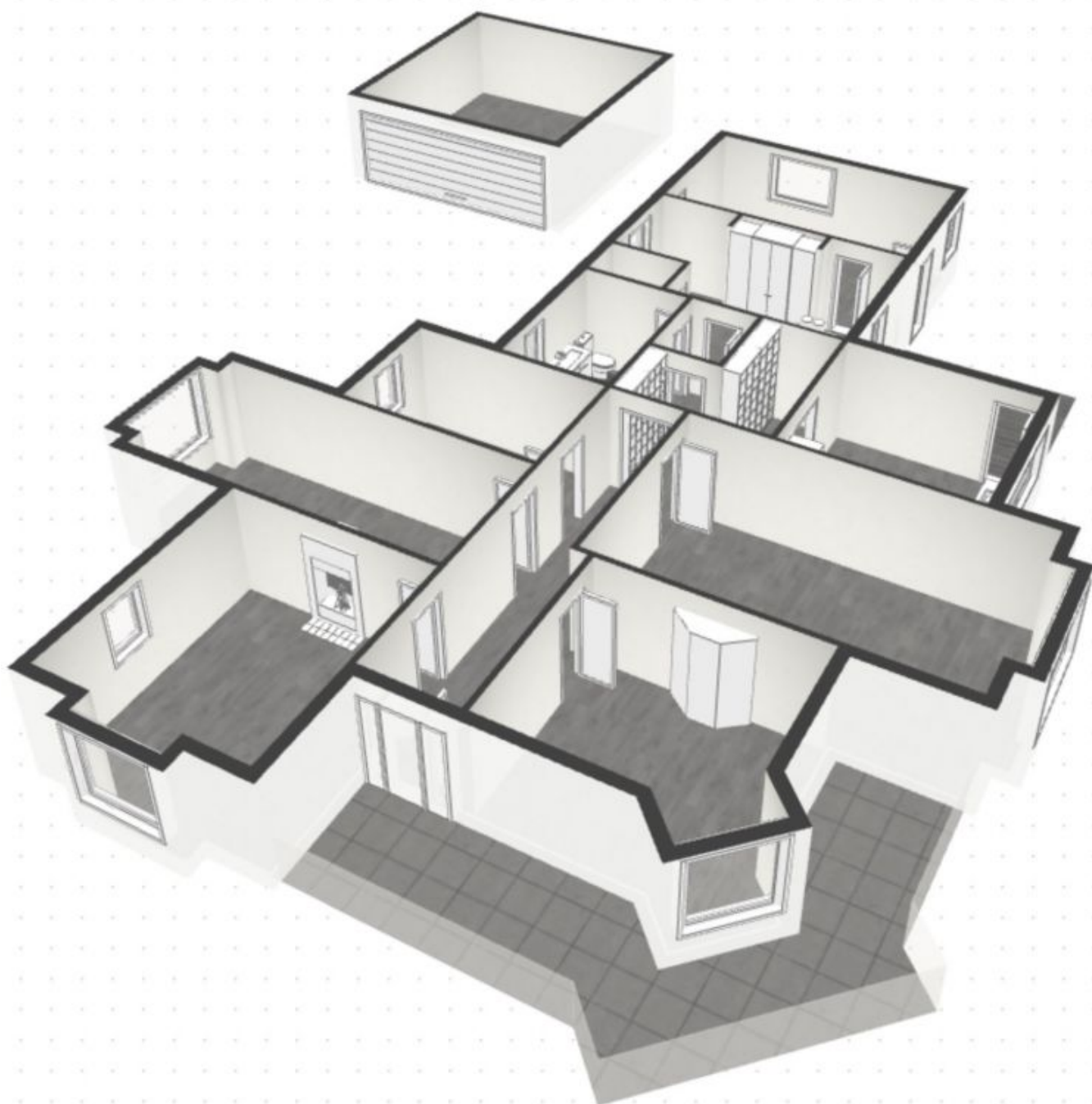
**Type** : House

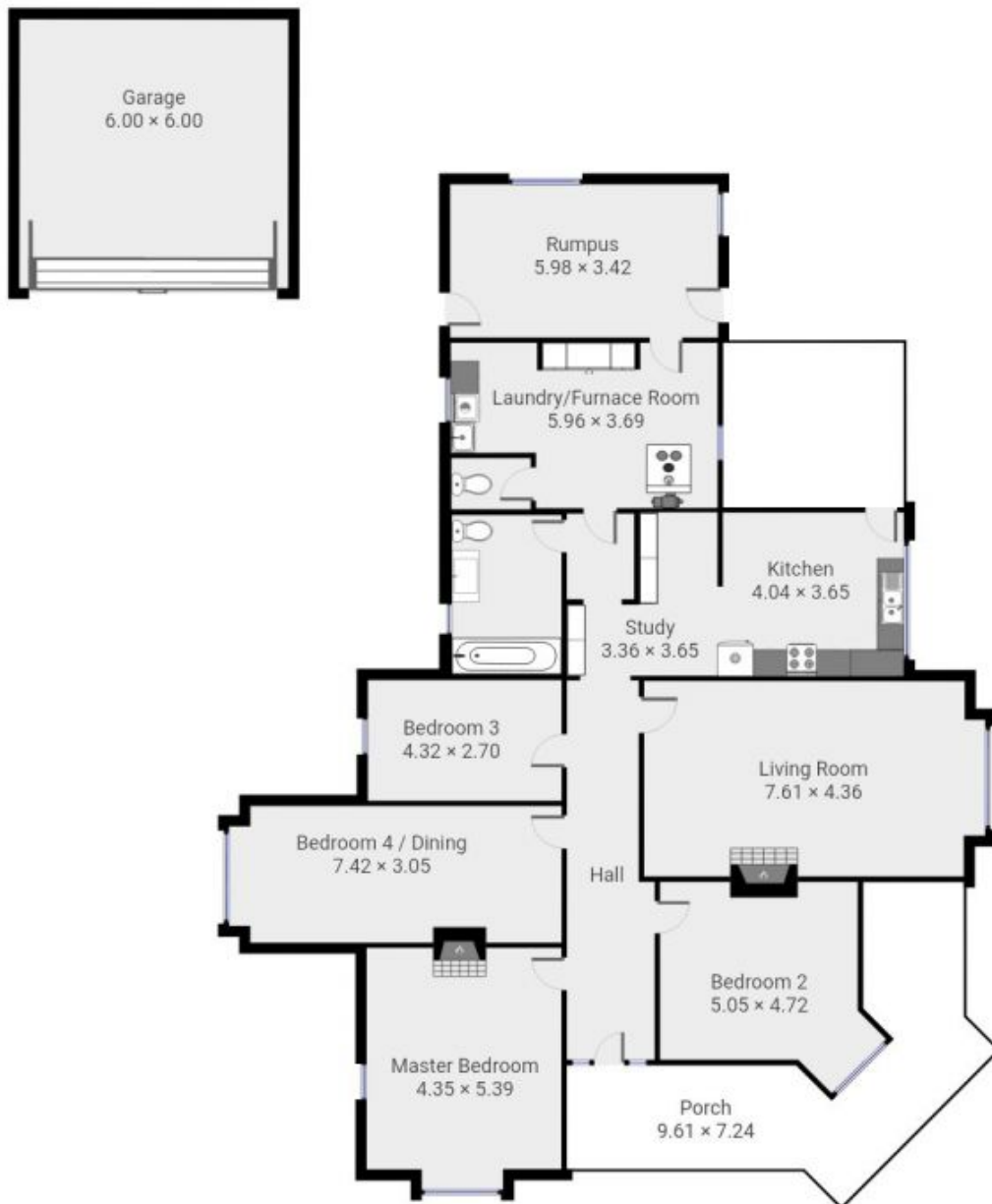
**View** : <https://www.mbre.com.au/sale/tas/burnie-devonport-nw-tas/sheffield/residential/house/7328417>

[For full version visit the website](https://www.mbre.com.au)

<https://www.mbre.com.au>







Michael Burr & Assoc This floor plan is to be used as a guide only.