



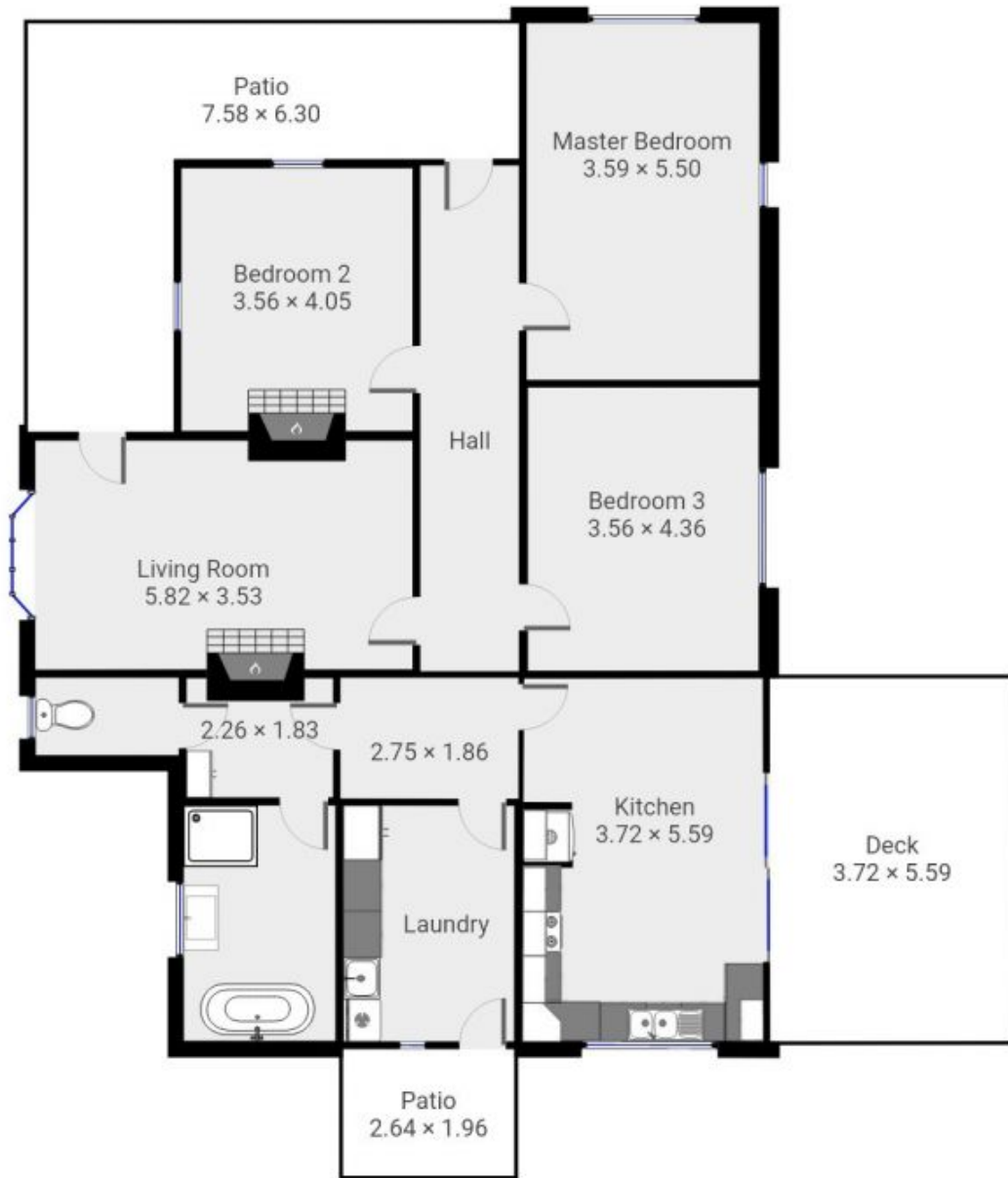
**4937 Frankford Road THIRLSTANE TAS**

3 1 1

This charming, Victorian style home is located amongst the beautiful farmland. The property stretches just over 2.4 acres, more than enough room for multiple sheds (S.T.C.A). Far enough out for peace and quiet yet only 10min (Approx.) to Latrobe and 8min (Approx.) to Port Sorell making commuting still relatively easy.

**Land Size** : 9712.46 sqm  
**View** : <https://www.mbre.com.au/sale/tas/burnie-devonport-nw-tas/thirlstane/residential/house/7328438>

This stunning home has been renovated from top to bottom, featuring 3 large bedrooms and a single contemporary bathroom. The open plan kitchen/dining opens out onto a deck with picturesque views of the countryside, this area is kept cosy by a reverse cycle heat pump. An oversized laundry and separate toilet are among the extra features. Relax in the living room by the fire enjoying a movie or even



Michael Burr & Assoc This floor plan is to be used as a guide only.